



High Precision PC (Polycarbonate) Chocolate 2D / 3D PC Moulds With Smoothly Surface

Specifications :

Payment Terms	L/C T/T Western Union
keyword	Chocolate moulds, chocolate forming moulds, chocolate PC moulds, 3D chocolate moulds, hollow chocolate moulds, silicon chocolate moulds, silicon moulds, Chocolate depositing line, One shot chocolate machine, one shot chocolate production line

Detail Introduction :

Chocolate 2d / 3d pc moulds

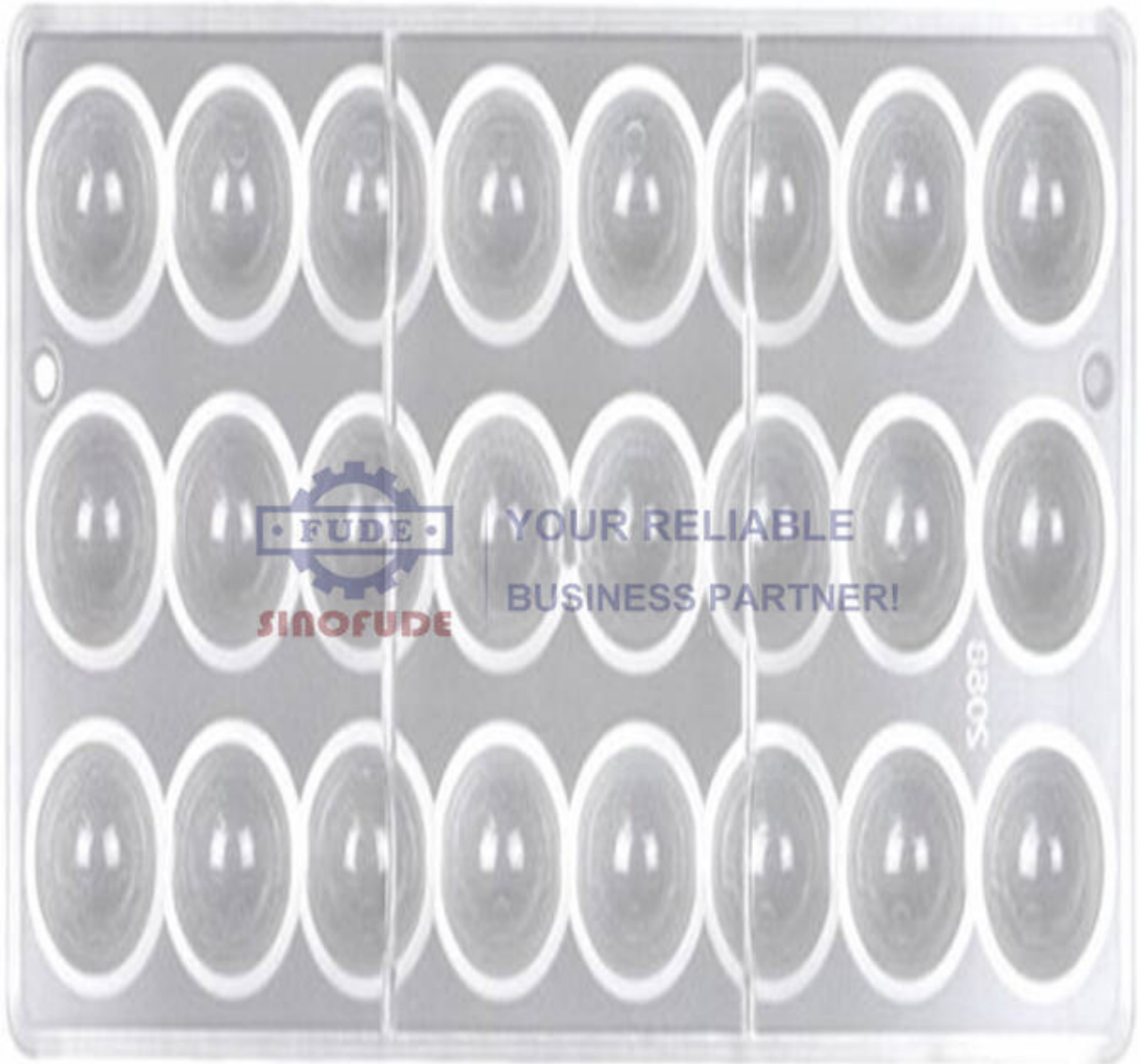
SINOFUDE Provide the supper quality chocolate moulds, we use all brand new PC (Polycarbonate) materials to make the moulds, No wastage and 2nd hand raw materials to make sure the moulds is highly transparent and smoothly surface.

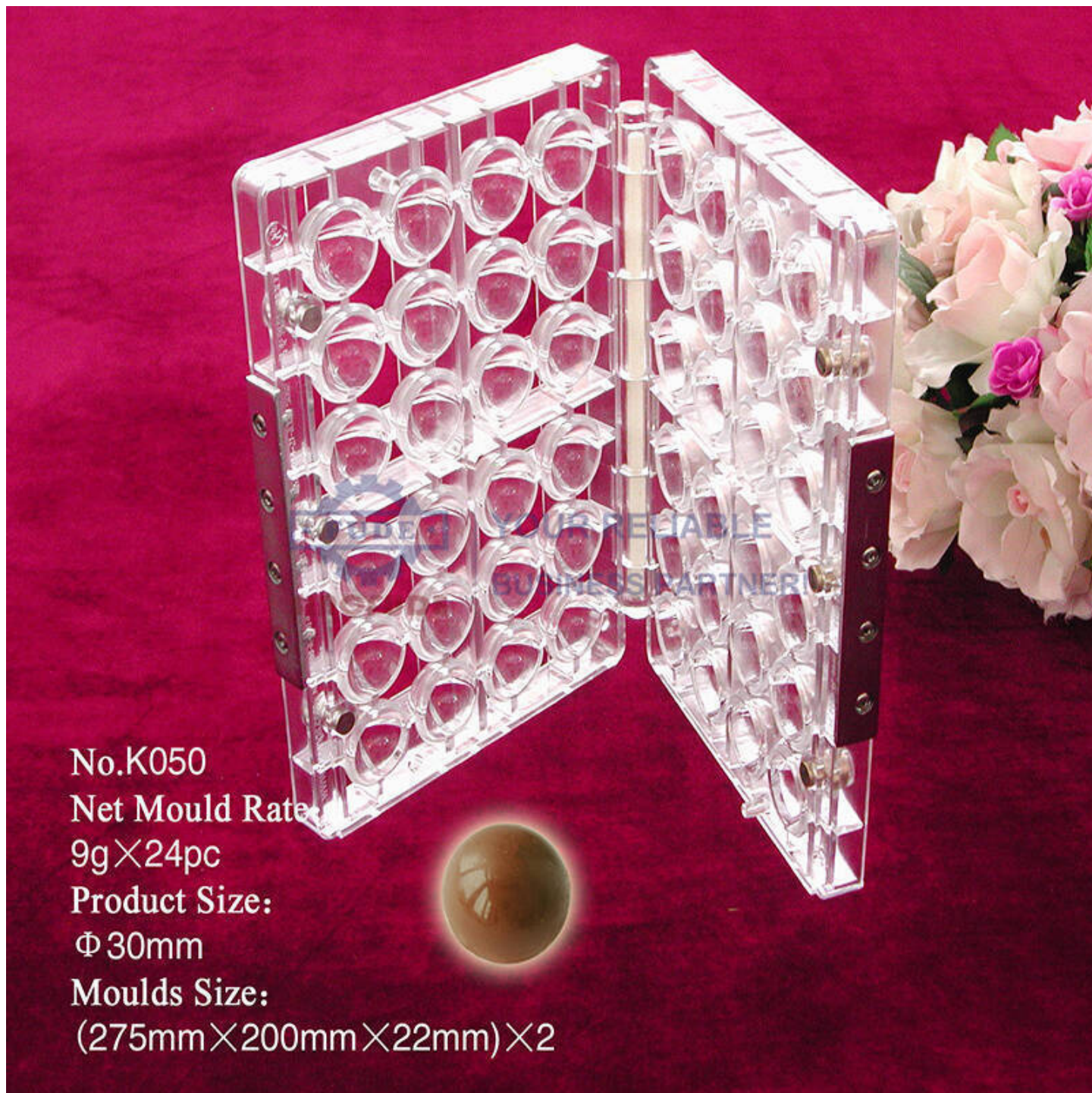
3D or 2D moulds are available for us to provide on time and quality assured.



YOUR RELIABLE
BUSINESS PARTNER!

info@sinofude.com





No.K050

Net Mould Rate:

9g×24pc

Product Size:

Φ 30mm

Moulds Size:

(275mm×200mm×22mm)×2

Chocolate Moulds Order Steps:

1. Chocolate sample or drawing provided by customer.
2. 3D design or Sample cavity provided by us for confirmation before mould making.
3. Moulds fabrication and packing for delivery.

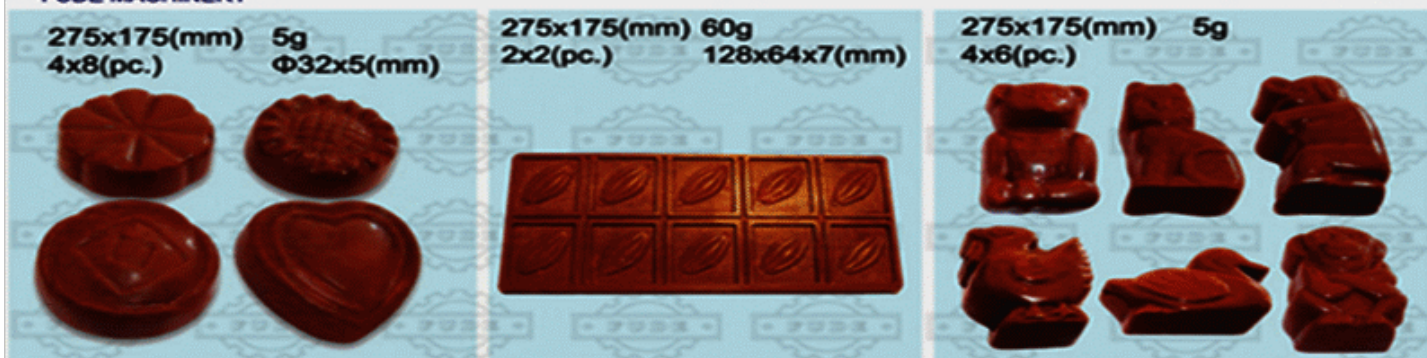


FUDE MACHINERY

[Http://www.sinofude.com](http://www.sinofude.com)

E-mail:info@sinofude.com

07



275x175(mm) 5g
4x8(pc.) Φ32x5(mm)

275x175(mm) 60g
2x2(pc.) 128x64x7(mm)

275x175(mm) 5g
4x6(pc.)

FCM081

FCM082

FCM083



275x175(mm)
4x6(pc.)
7.7g
43x19.6x9(mm)

275x175(mm) 22g
4x2(pc.) 76.5x44x6.5(mm)

275x175(mm)
2x6(pc.)
15g
56.5x40x10.8(mm)

275x175(mm)
2x6(pc.)
19g
57.5x44.5x10(mm)

FCM084

FCM085

FCM086

FCM087



275x175(mm)
4x8(pc.)
6g
34x19.5x9(mm)

275x175(mm)
4x6(pc.)
5.2g
Φ22.3x20.3(mm)

275x175(mm)
4x8(pc.)
4g
31.4x25.5x10(mm)

275x175(mm) 13g
2x8(pc.) 27x19x10(mm)

SWEET TIME

FCM088

FCM089

FCM090

FCM091

[Http://www.sinofude.com](http://www.sinofude.com)

E-mail:info@sinofude.com

Tel:86-021-57416165



FUDE MACHINERY

[Http://www.sinofude.com](http://www.sinofude.com)

E-mail:info@sinofude.com

04

300x225(mm) 6g
4x8(pc.) 48x20x7(mm)



FCM038

300x225(mm)
4x8(pc.)
6g
37x27.5x6(mm)



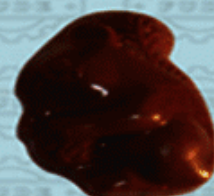
FCM039

300x225(mm)
8x8(pc.)
3g
23.4x17x10(mm)



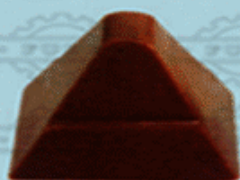
FCM040

300x225(mm)
4x8(pc.)
4g
34x23x9(mm)



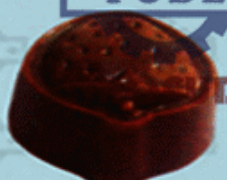
FCM041

300x225(mm)
4x8(pc.)
8.5g
29.3x23x25(mm)



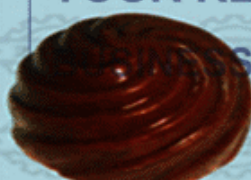
FCM042

300x225(mm)
4x8(pc.)
10.5g
33.9x25x16.2(mm)



FCM043

300x225(mm)
4x8(pc.)
12.5g
Φ31.5x19(mm)



FCM044

300x225(mm)
4x8(pc.)
10g
27.6x22.5x18.3(mm)



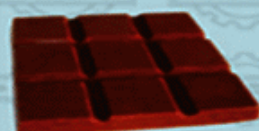
FCM045

300x225(mm)
4x8(pc.)
8.5g
28x20.7x17(mm)



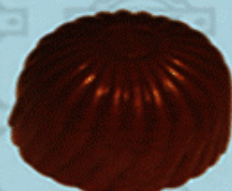
FCM046

300x225(mm)
4x2(pc.)
22g
57.5x57.5x5.5(mm)



FCM047

300x225(mm)
4x8(pc.)
12g
Φ20(mm)



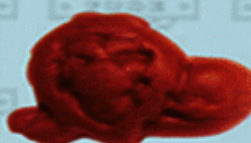
FCM048

300x225(mm)
4x8(pc.)
5.5g
76x38x4.2(mm)



FCM049

300x225(mm)
4x8(pc.)
4g
31x30x9.5(mm)



FCM050

300x225(mm)
6(pc.)
40g
80x84x8(mm)



FCM051

[Http://www.sinofude.com](http://www.sinofude.com)

E-mail:info@sinofude.com

Tel:86-021-57416165



No.K-020
Net Mould Rate:
35g×4pc
Product Size:
90mm×56mm×54mm
Moulds Size:
(275mm×200mm×31mm)×2pcs.